

EPLUS MANAGED SD-WAN

Is Your Network SD-WAN Ready?

If you're like most organizations, your IT team is facing increasing demands. Your customers want to experience more...and, in response, your branch offices need to deliver more:

- ✓ Hybrid-Cloud Access
- ✓ Bandwidth Optimization
- ✓ Video Conferencing
- ✓ Application Performance Improvement
- ✓ Resiliency

Mainstream Adoption of SD-WAN

Many customers are turning to software-defined wide-area networking (SD-WAN) and ePlus to provide a better experience, reduce costs, improve application performance, and incorporate better security across the board.

\$5.25B

.....
Estimated size of the SD-WAN infrastructure market by 2023¹

68%

.....
Of enterprises will purchase SD-WAN by 2023²

45%

.....
Of end users who implement SD-WAN will favor a managed service approach³

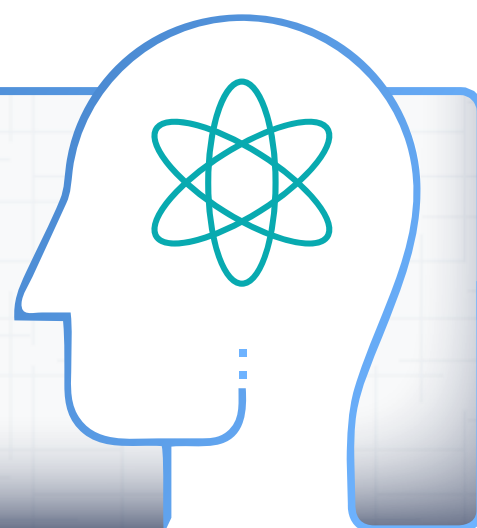


Transformation and Disruption

SD-WAN is transforming the way we do business, but it is also considered one of the most disruptive infrastructure technologies⁴. To realize the full benefits, it requires an engineering shift in mindset and responsibilities—and not all organizations have the internal knowledge or bandwidth to effectively manage it.

ePlus Managed SD-WAN

ePlus brings a unique skillset to our Managed SD-WAN offering, leveraging industry-leading SD-WAN technology from Cisco, ScienceLogic, and LiveAction, best-of-breed service provider connectivity, and ePlus Managed Services to deliver what traditional WANs cannot to support cloud, application visibility, management, and redundancy.



Built on Managed Services:

Offload the management and remediation of your SD-WAN solution through ePlus Managed Services to maximize your agility, application control, and efficiency while maintaining your internal staff's focus on strategic business outcomes.



24 x 7 x 365
Support



People, Process,
Tools



ITIL / SSAE16
Audited



Predictable
Outcomes



Enhanced Visibility
and Analytics

Across-the-Board Benefits

- ✓ Give branch offices more connectivity (increase bandwidth by up to 20x)
- ✓ Improve the overall performance of your SD-WAN environment
- ✓ Leverage built-in advanced security functions
- ✓ Optimize IT and connectivity costs
- ✓ Simplify management with application-aware features

Are You Ready for SD-WAN?

The ePlus SD-WAN Readiness Assessment identifies how SD-WAN's application visibility, performance, resiliency, and cost savings compare to your current WAN. Click the button below to learn more about our readiness assessment and how ePlus can help you design, implement, and manage your SD-WAN.